

carl **TONKS** consulting

cTc Transport Planning

Newsletter #1 of 2020

As we are all practising social distancing, it seemed a good opportunity to produce **cTc**'s first Newsletter of 2020; to keep us all in communication during these unusual times. We would like to start by wishing all of our clients, colleagues, fellow consultants, local authority officers and our competitors well. Keep safe and stay healthy.

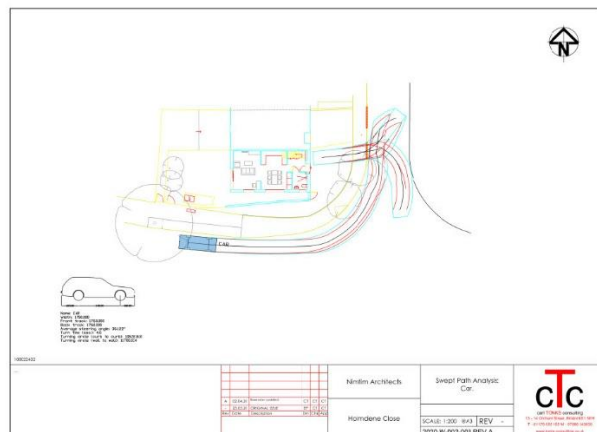
In line with Government guidance and of course common sense, **cTc** is currently practising home-working. In reality this has always been a feature of how we run the business; using cloud-based IT solutions such that we can work just as well from home as we can in the office, so in that respect it is business as usual. Clearly, one only needs to look out of the window to see that the rest of the world is not business as usual, to the point that traffic conditions are highly abnormal, preventing collection of new traffic volumetric survey data. We have a number of sites, however, for which traffic speeds are more of an issue than traffic volumes and these are progressing with new data collection. For other sites we have sources of historic traffic data from which we are compiling evidence-based assessments of traffic volumes and enabling work to continue.

The key point is that we are not simply at home; we are **working** from home; projects continue to be progressed in spite of the current difficulties. Below is a brief round up of some of the projects on which **cTc** has been recently engaged and illustrates the continued geographic spread of our work. Our head office in Bristol is located convenient to the crossroads of the M4 and M5 corridors, via which the whole of the UK is easily and efficiently accessible, enabling us to work throughout the Country.

carl TONKS consulting is advising a planning consultant and land owner in regard to opportunities for redevelopment of agricultural barns to provide rural employment opportunities, on a major historic estate in Cambridgeshire.

carl TONKS consulting compiled a Transport Statement in support of a proposal to convert an historic public house into a pre-school children's nursery in Worle, North Somerset. The Statement concluded that the proposal would attract fewer peak hour trips than the previous use of the site, hence would provide an operational benefit to the local highway, in addition to being conveniently located close to bus stops and in a sustainable, town centre location.

cTc Transport Planning is supporting a twin-track re-Application and Appeal in regard to a refused Application for a single new dwelling on land currently comprising a garden for an adjacent house in East London. Issues arising include manoeuvring space and opportunities for pedestrians to safely access the dwelling. These have been addressed by use of vehicle swept path analyses to inform minor changes in the design and layout of access.



carl TONKS consulting is assisting a local landowner to investigate options and issues arising in regard to potential to convert a North Somerset historic listed farmstead into a hotel. This has involved appraising site access opportunities in order to ensure appropriate options are provided to connect via the local rural routes to the nearby major road network.



A local childcare business has commissioned **carl TONKS consulting** to support their application for change of use of a storage room above a local bar to provide much needed morning and evening (pre- and post- school) childcare in association with a nearby primary school in the home of English Rugby, Twickenham. Negotiations required compiling a Green Travel Plan in order to reduce car reliance for generated trips, hence preclude unsafe drop-off and pick-up manoeuvres in the vicinity of the site entrance. Subsequent to undertaking mode-split surveys of trips to the clients' existing childcare business, Planning Permission was granted by London Boroughs of Richmond and Wandsworth in time to seek OFSTED approval for the next school cohort.

A local landowner has commissioned **carl TONKS consulting** to investigate access opportunities to a rehabilitated former quarry in North Somerset.

carl TONKS consulting is advising a regular planning consultant client of ours in regard to options for farm diversification schemes on an agricultural estate in Somerset.

Should you have any transport planning or traffic engineering requirements to support your property management or development aspirations, please do not hesitate to contact **cTc** via either of the following;

For sites in England;

Carl Tonks BSc MSc FCILT MCIHT FIHE
carl TONKS consulting

07866 543939
carl@tonks-consulting.co.uk

*For sites in Wales, the Welsh border
Counties, Scotland or Northern Ireland;*

Jacqueline Ireland BSc (Oxon) MSc MCIHT
cTc Transport Planning

07815 940773
jacqueline@tonks-consulting.co.uk

Or for more information; **www.tonks-consulting.co.uk**

Most importantly in these uncertain times;

Be careful and stay safe